

Blood Glucose Monitoring System CareSens II

Reliable
Advanced Biosensor Technology



Faster, Easier, Less Painful

Specifications

Test Range	20~600 mg/dL (1.1~33.3 mmol/L)
Sample Size	Minimum 0.5 μ l
Test Time	5 Seconds
Test Sample	Fresh capillary whole blood
Calibration	Plasma-equivalent
Assay Method	Electrochemical
Battery Life	1,000 Tests
Memory	250 blood glucose values
Dimension	95 X 40 X 18 mm
Weight	44 g (battery included)

- 14day averaging
- USB data download port

Operating Range

Temperature	10 ~ 40°C (50 ~ 104°F)
Relative Humidity	10 ~ 90%
Hematocrit	20 ~ 60%



※ Actual Size



Test Time



Sample Size

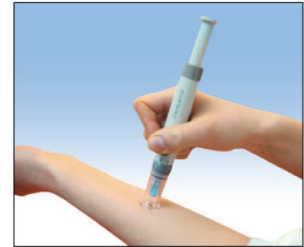


CareSens II



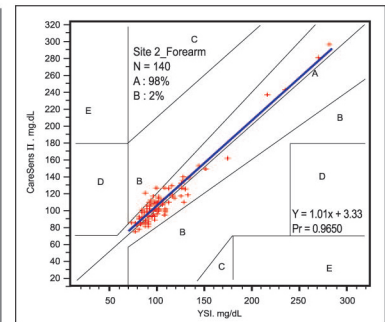
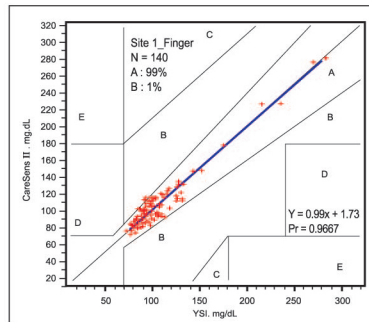
Alternative site blood collection

CareSens allows alternative site monitoring where fewer nerve endings exist to greatly reduce pain associated with drawing blood for testing.

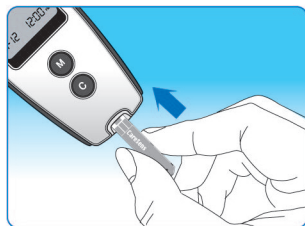


Accurate results with fingertip or alternative site testing

The CareSens II meter guarantees, with proper use, accurate blood glucose measurement regardless of sample location. Whether a sample is drawn from fingertip, forearm, palm, calf or thigh, the results are accurate.



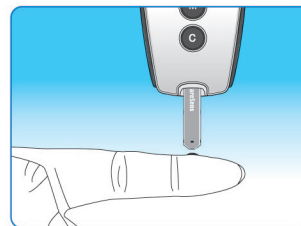
Easy to use



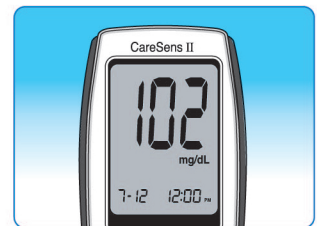
1 Insert test strip



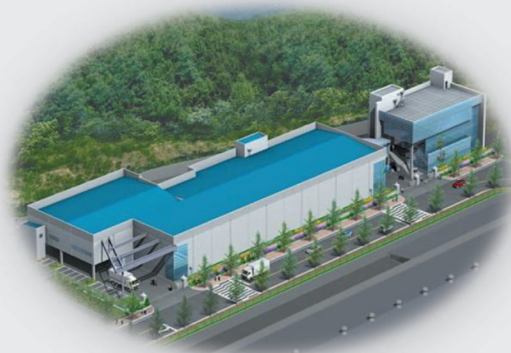
2 Match the code number



3 Apply blood sample



4 Result in 5 seconds



World-leading R&D and world-class large capacity manufacturing facility



Based on state-of-the-art biosensor technology, CareSens products are exported all over the world